

# North Davis Habitat Gardens: Urban Greening Concepts

## Cottonwood Trail

**Phase 1** should extend from just north of Waxwing Pl. to just south of Robin Pl.; this section passes the native cottonwoods, and is relatively free of exotic vegetation.

**Phase 2** should be implemented if phase 1 is successful and cost-effective. This would make the trail more substantial, and increase accessibility of the trail and viewing area.

## Recycled Materials Pollinator Garden



Alt. B

**Alt. A**  
Alternative A utilizes the space currently occupied by the Health Beat Stations, and extends to the channel bed. The observation deck would create a sense of destination, but may be in conflict with environmental regulations.

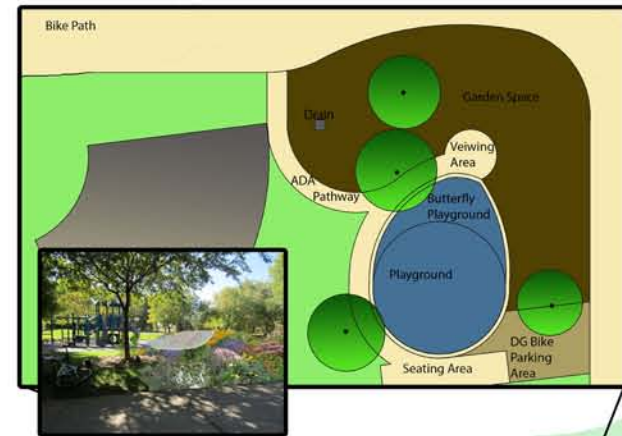
**Alternative B** would allow us to retain the exercise equipment and reduce the amount of irrigation needed on site, but the garden would be disconnected from the creek, reducing water resources for pollinators and making viewing opportunities less spectacular.

### Elements:

- A variety of native trees, shrubs, grasses, and flowers in a variety of different shapes, sizes, colors, and bloom times, including shelter plants, nectar plants, and larval host plants
- Recycled materials
- Bright colors (especially reds)
- A damp salt lick
- Hummingbirds baths/feeders
- Large rocks, exposed soil, or other sunny spots
- Water/puddling resources
- Bee boxes/man-made habitat structures



## Butterfly Playground



Alt. A

### Elements:

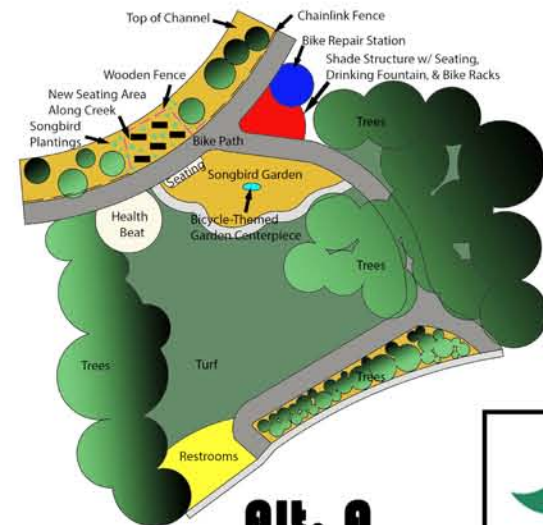
- A variety of vegetation in different shapes, sizes, and colors, including shelter plants, nectar plants, and host plants
- Mulch around base of host plants for caterpillars
- Large rocks, exposed soil, or other sunny spots for butterflies to warm up
- Access to water
- Butterfly-themed playground equipment
- Local children's art
- Improved bike parking



## Birds & Bikes

### Goals:

- Restore native bird habitat
- Improve seating and views of the creek and the horizon
- Provide cyclist amenities



Alt. A

### Elements:

- Rustic, woody materials used in signage, fencing, benches, etc.
- Interpretive display should showcase the native plants and habitat restoration efforts
- Western Red Cedar Stacked-Rail (Zig-Zag) fencing.
- Clusters of native plants



Alt. B



Alt. C

## Make Learning Fun!